



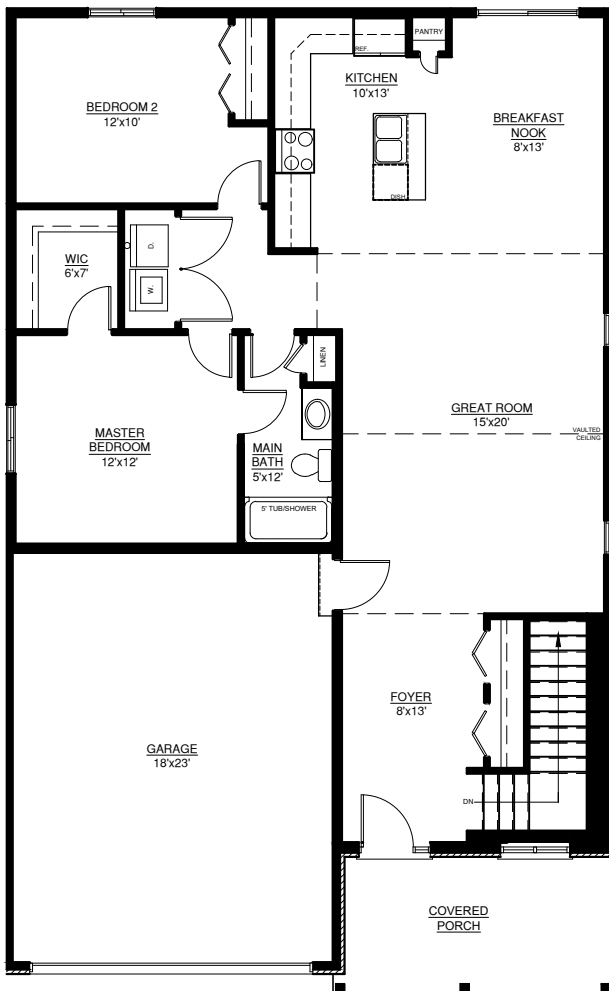
**FEATURING**

- 2 BEDROOMS
- 1 BATHROOM
- VAULTED CEILING IN GREAT ROOM
- MAIN FLOOR LAUNDRY
- KITCHEN PANTRY

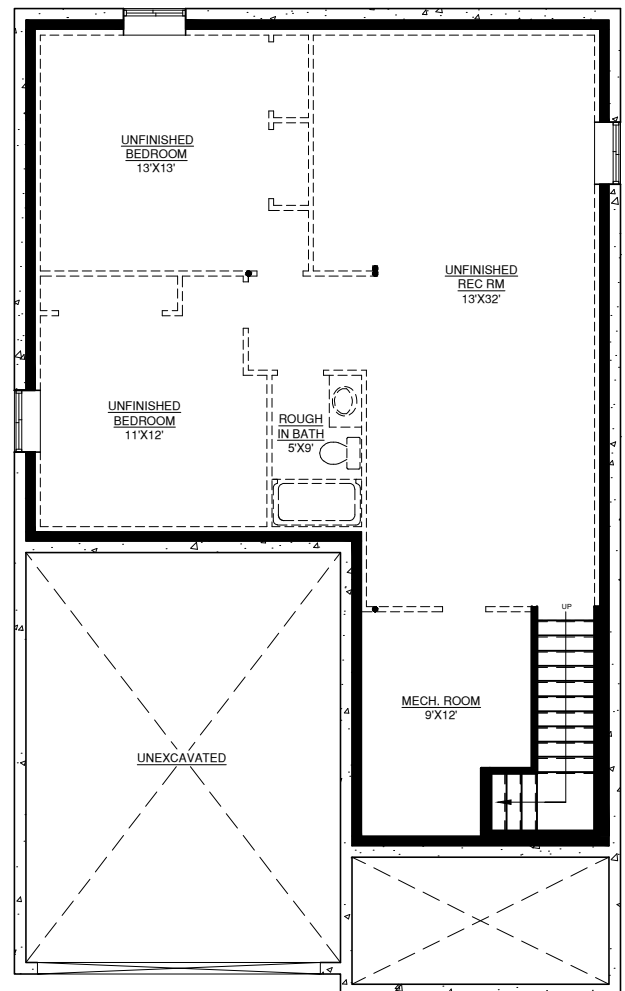
# MALLARD

1,398 FT<sup>2</sup>

FRONT ELEVATION



GROUND FLOOR PLAN



BASEMENT FLOOR PLAN